

## Efficient numerical methods for the large-scale parallel solution of thermomechanical contact problems under consideration of mesh separation

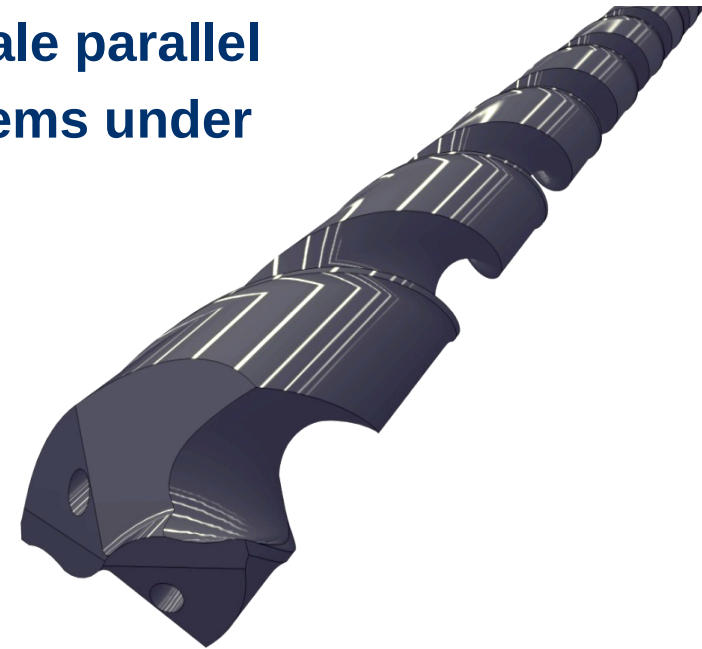
August, 16. 2013

Dr. Jörg Frohne

Prof. Heribert Blum

Dr. Andreas Rademacher

Dipl.-Math. Korosh Taebi

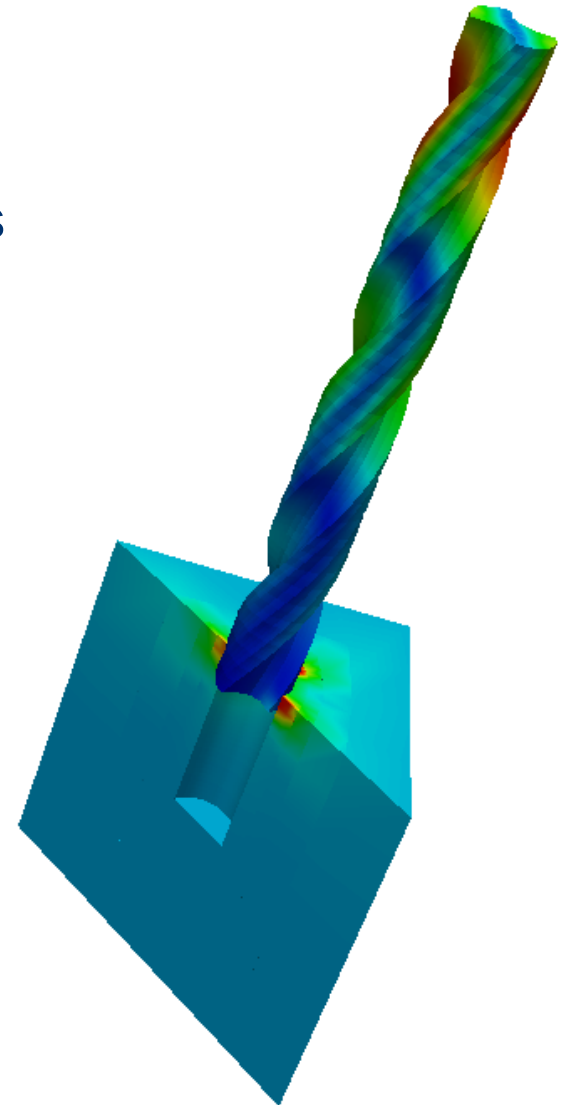


Institut für Spanende Fertigung  
Prof. Dr.-Ing. Dirk Biermann  
TU Dortmund



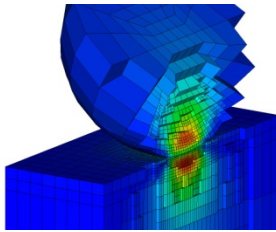
Lehrstuhl für Wissenschaftliches Rechnen  
Prof. Dr. Heribert Blum  
TU Dortmund

- Motivation
- Modeling of elastoplastic material behavior
  - Some classical and variational formulations
  - Including contact problem
- A semismooth Newton method for solving contact and plasticity
- Large-scale parallel solution (Prof. Wolfgang Bangerth and Prof. Timo Heister)
- Coupling with temperature
- Mesh separation by using DG-Elements
- Outlook

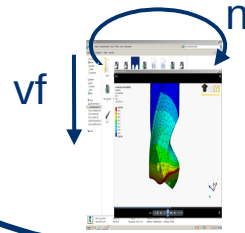


# Motivation

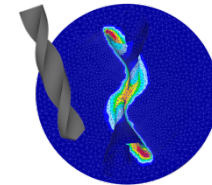
Contact



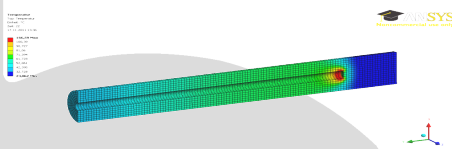
Kinematic



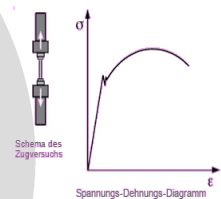
Friction, evolution of heat



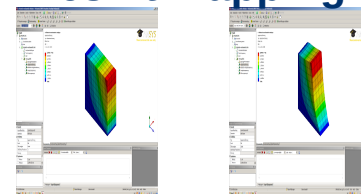
Heat conduction



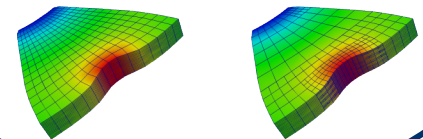
Modeling of material



Remeshing, result mapping

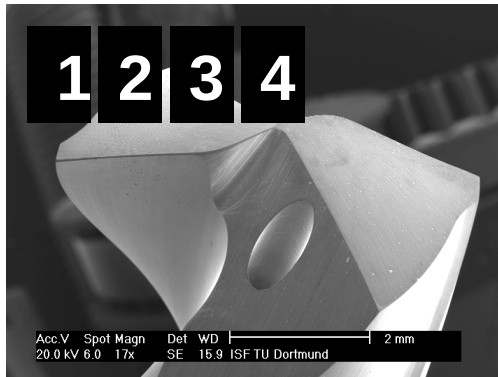


Adaptive error estimation

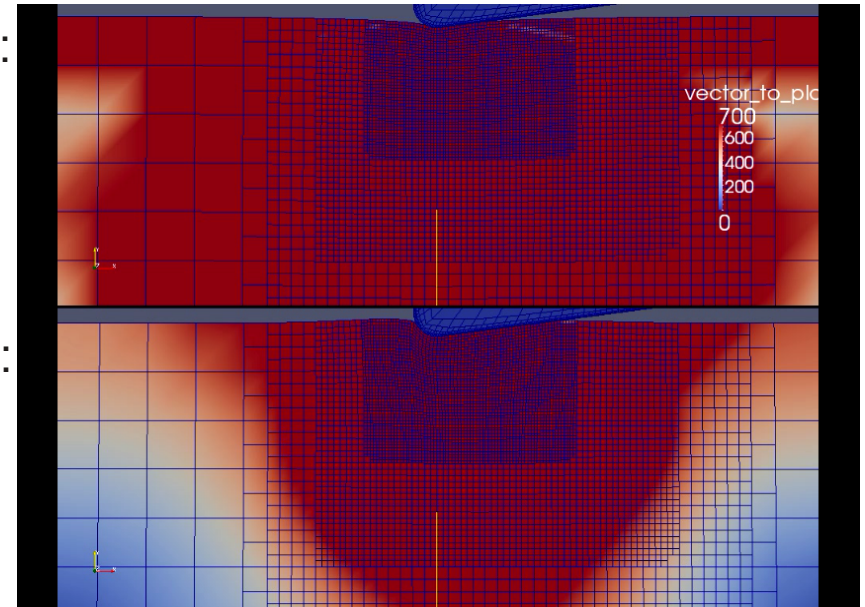


# Motivation

Drilling process:



Pure elastic:



Elasto-plastic:

von. Mises stress intensity:

# Classical formulation of the elastic problem

$$-\operatorname{div}(\sigma) \geq f, \quad \text{in } \Omega$$

Equilibrium condition

$$u(x,y) = 0, \quad \text{on } \partial\Omega$$

Boundary condition

$$\sigma = E \nabla u, \quad \text{in } \Omega$$

Hooke's law



## Anti-plane shear problem

$$\sigma = \begin{bmatrix} \sigma_{1,1} & \sigma_{1,2} & \sigma_{1,3} \\ \sigma_{1,2} & \sigma_{2,2} & \sigma_{2,3} \\ \sigma_{1,3} & \sigma_{2,3} & \sigma_{3,3} \end{bmatrix} = E \begin{bmatrix} 0 & 0 & \frac{\partial u_3}{\partial x_1} \\ 0 & 0 & \frac{\partial u_3}{\partial x_2} \\ \frac{\partial u_3}{\partial x_1} & \frac{\partial u_3}{\partial x_2} & 0 \end{bmatrix} = E \nabla u$$

# Classical formulation of the elastic problem



$$\begin{aligned} -\operatorname{div}(\sigma) &= f & , & \text{ in } \Omega & & \text{Equilibrium condition} \\ u(x,y) &= 0 & , & \text{ on } \partial\Omega & & \text{Boundary condition} \\ \sigma &= E \nabla u & , & \text{ in } \Omega & & \text{Hooke's law} \end{aligned}$$

## Anti-plane shear problem

$$\begin{aligned} u(x,y) &= u_3(x,y) \\ \sigma &= (\sigma_1, \sigma_2) \\ &= E \left( \frac{\partial u}{\partial x_1}, \frac{\partial u}{\partial x_2} \right) \end{aligned}$$



# Classical formulation of perfect elastoplasticity



$\nabla u$	$= E^{-1}\sigma + \lambda$	, in $\Omega$	Elasto-plastic formulation
$\lambda \cdot (\tau - \sigma)$	$\leq 0$	$\forall F(\tau, \dots) \leq 0$ , in $\Omega$	
$-\text{div}(\sigma)$	$= f$	, in $\Omega$	Equilibrium condition
$u(x, y)$	$= 0$	, on $\partial\Omega$	Boundary condition
$\sigma^{trial}$	$= E \nabla u$	, in $\Omega$	Hooke's law

Some possible yield functions:

$$F(\tau) = |\tau| - \sigma_0$$

Perfect plastic

$$F(\tau, \varepsilon_p) = |\tau| - (\sigma_0 + \gamma_{iso} \varepsilon_p)$$

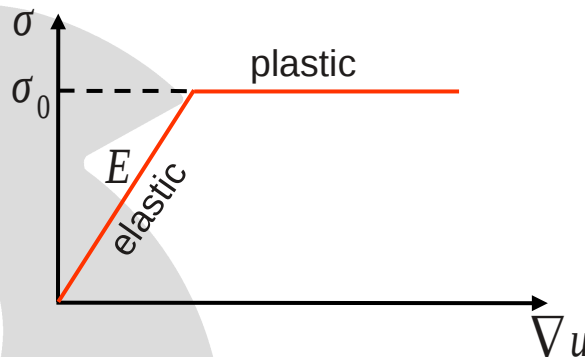
Isotropic hardening

$$F(\tau, \varepsilon_p, \dot{\varepsilon}_p, T) = |\tau| - \sigma_y$$

Johnson Cook

$$\sigma_y = (A - B \varepsilon_p^n) (1 + C \ln(\dot{\varepsilon}_p)) (1 - (T - T^R)/(T^m - T^R))$$

Stress-strain diagram:



# Classical formulation of elastoplasticity with linear isotropic hardening

$\nabla u = E^{-1}\sigma + \lambda$	, in $\Omega$	Elasto-plastic formulation
$\lambda \cdot (\tau - \sigma) \leq 0 \quad \forall F(\tau, \dots) \leq 0$	, in $\Omega$	
$-\text{div}(\sigma) = f$	, in $\Omega$	Equilibrium condition
$u(x, y) = 0$	, on $\partial\Omega$	Boundary condition
$\sigma^{trial} = E \nabla u$	, in $\Omega$	Hooke's law

Some possible yield functions:

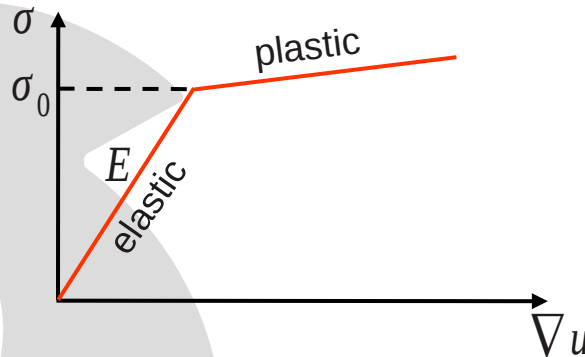
$$F(\tau) = |\tau| - \sigma_0 \quad \text{Perfect plastic}$$

$$F(\tau, \varepsilon_p) = |\tau| - (\sigma_0 + \gamma_{iso} \varepsilon_p) \quad \text{Isotropic hardening}$$

$$F(\tau, \varepsilon_p, \dot{\varepsilon}_p, T) = |\tau| - \sigma_y \quad \text{Johnson Cook}$$

$$\sigma_y = (A - B \varepsilon_p^n) (1 + C \ln(\dot{\varepsilon}_p)) (1 - (T - T^R) / (T^m - T^R))$$

Stress-strain diagram:





# Classical formulation of elastoplasticity with Johnson Cook nonlinear hardening

$\nabla u = E^{-1}\sigma + \lambda$	, in $\Omega$	Elasto-plastic formulation
$\lambda \cdot (\tau - \sigma) \leq 0 \quad \forall F(\tau, \dots) \leq 0$	, in $\Omega$	
$-\text{div}(\sigma) = f$	, in $\Omega$	Equilibrium condition
$u(x, y) = 0$	, on $\partial\Omega$	Boundary condition
$\sigma^{trial} = E \nabla u$	, in $\Omega$	Hooke's law

Some possible yield functions:

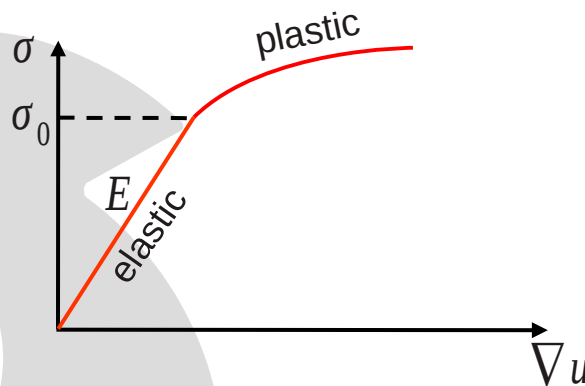
$$F(\tau) = |\tau| - \sigma_0 \quad \text{Perfect plastic}$$

$$F(\tau, \varepsilon_p) = |\tau| - (\sigma_0 + \gamma_{iso} \varepsilon_p) \quad \text{Isotropic hardening}$$

$$F(\tau, \varepsilon_p, \dot{\varepsilon}_p, T) = |\tau| - \sigma_y \quad \text{Johnson Cook}$$

$$\sigma_y = (A - B \varepsilon_p^n) (1 + C \ln(\dot{\varepsilon}_p)) (1 - (T - T_R) / (T_M - T_R)^m)$$

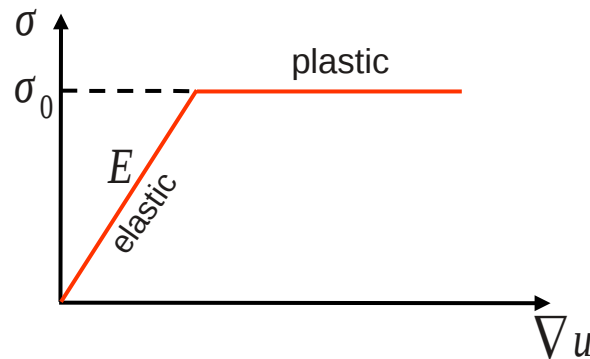
Stress-strain diagram:



# Classical formulation of elastoplasticity with contact

$$\begin{aligned} \nabla u &= E^{-1}\sigma + \lambda & , & \text{in } \Omega & \text{Elasto-plastic} \\ \lambda \cdot (\tau - \sigma) &\leq 0 \quad \forall F(\tau, \dots) \leq 0 & , & \text{in } \Omega & \text{formulation} \\ -\text{div}(\sigma) &= f & , & \text{in } \Omega & \text{Equilibrium condition} \\ u(x, y) &= 0 & , & \text{on } \partial\Omega & \text{Boundary condition} \\ (\Delta u + f)(u - g) &= 0 & , & \text{in } \Omega & \text{Contact-conditions} \\ u(x, y) &\geq g(x, y) & , & \text{in } \Omega & \\ \sigma^{trial} &= E \nabla u & , & \text{in } \Omega & \text{Hooke's law} \end{aligned}$$

Stress-strain diagram:



# (Dual) Variational formulation of perfect elastoplasticity with contact

Find a pair  $(\sigma, u) \in \Pi W_0^{div} \times V^+$

$$(E^{-1} \sigma, \tau - \sigma) + (u, \operatorname{div}(\tau) - \operatorname{div}(\sigma)) \geq 0 \quad \forall \tau \in \Pi W_0^{div}$$

$$-(\operatorname{div}(\sigma), \phi - u) \geq (f, \phi - u) \quad \forall \phi \in V^+$$

$$W_f^{div} := \left\{ \tau \in L^2(\Omega)^2 \mid \operatorname{div}(\tau) \in L^2(\Omega), \operatorname{div}(\tau) + f \geq 0 \text{ in } \Omega \right\}$$

$$\Pi W_f^{div} := \left\{ \tau \in W_f^{div} \mid |\tau| \leq \sigma_0 \right\}$$

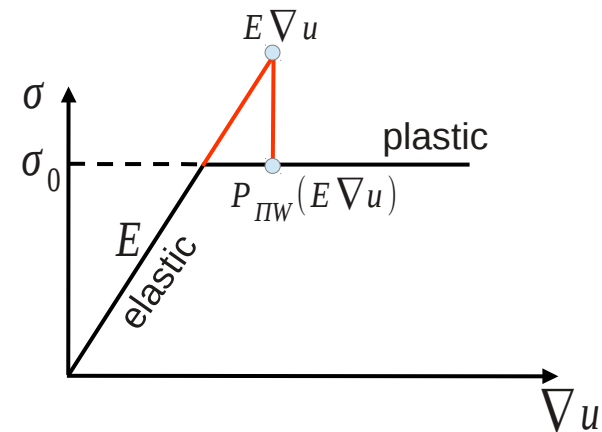
$$V^+ := \left\{ v \in H_0^1(\Omega) : v \geq g \text{ a.e. in } \Omega \right\}$$

# (Primal) Variational formulation of perfect elastoplasticity with contact

Applying a projection theorem yields:

$$\sigma = P_{\Pi W}(E \nabla u) = \begin{cases} \tau, & |\tau| \leq \sigma^0 \\ \sigma^0 \frac{\tau}{|\tau|}, & |\tau| > \sigma^0 \end{cases}$$

Stress-strain diagram:



Find  $u \in V^+$

$$(P_{\Pi W}(E \nabla u), \varepsilon(\phi) - \varepsilon(u)) \geq (f, \phi) \quad \forall \phi \in V^+$$

# Primal-dual active set method

(1) Initialize  $A_1$  and  $F_1$ , such that  $S=A_1 \cup F_1$  and  $A_1 \cap F_1 = \{\}$

(2) Assemble newton matrix  $A^k = a'(u^{k-1}; \phi_i, \phi_j)$  and right hand-side  $f(u^{k-1})$ .

(3) Find primal-dual pair  $(\bar{u}^k, \lambda^k)$

$$\begin{aligned} A^k \bar{u}^k + B \lambda^k &= f(u^k), \\ \bar{u}_{n,p}^k &= g_p \quad \forall p \in A_k, \\ \lambda_p^k &= 0 \quad \forall p \in F_k. \end{aligned}$$

(4) Line search: Find  $\alpha \in (0, 1]$  with  $|f(u^k)| < |f(u^{k-1})|$  for  $u^k = \alpha u^{k-1} + (1 - \alpha) \bar{u}^k$

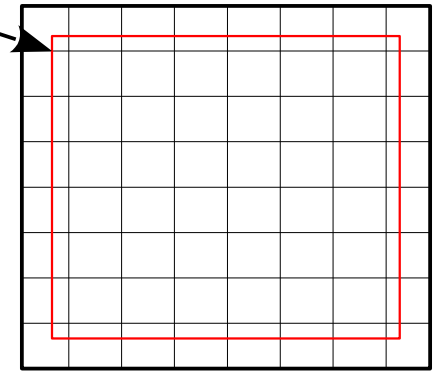
(5) Define new active and inactive sets by

$$\begin{aligned} A_{k+1} &:= \left\{ p \in S : \lambda_p^k + c(u_{n,p}^k - g_p) > 0 \right\}, \\ F_{k+1} &:= \left\{ p \in S : \lambda_p^k + c(u_{n,p}^k - g_p) \leq 0 \right\}. \end{aligned}$$

(6) If  $A_{k+1} = A_k$ ,  $F_{k+1} = F_k$  and  $|f(u^k)| < \delta$  then stop, else set  $k = k + 1$  and go to step (2).

all vertices inside  
the red rectangle

Mesh



# Primal-dual active set method

(1) Initialize  $A_1$  and  $F_1$ , such that  $S=A_1 \cup F_1$  and  $A_1 \cap F_1 = \{\}$

(2) Assemble newton matrix  $A^k = a'(u^{k-1}; \phi_i, \phi_j)$  and right-hand-side  $f(u^{k-1})$ .

(3) Find primal-dual pair  $(\bar{u}^k, \lambda^k)$

$$\begin{aligned} A^k \bar{u}^k + B \lambda^k &= f(u^k), \\ \bar{u}_{n,p}^k &= g_p \quad \forall p \in A_k, \\ \lambda_p^k &= 0 \quad \forall p \in F_k. \end{aligned}$$

(4) Line search: Find  $\alpha \in (0, 1]$  with  $|f(u^k)| < |f(u^{k-1})|$  for  $u^k = \alpha u^{k-1} + (1-\alpha) \bar{u}^k$

(5) Define new active and inactive sets by

$$\begin{aligned} A_{k+1} &:= \left\{ p \in S : \lambda_p^k + c(u_{n,p}^k - g_p) > 0 \right\}, \\ F_{k+1} &:= \left\{ p \in S : \lambda_p^k + c(u_{n,p}^k - g_p) \leq 0 \right\}. \end{aligned}$$

(6) If  $A_{k+1} = A_k$ ,  $F_{k+1} = F_k$  and  $|f(u^k)| < \delta$  then stop, else set  $k = k+1$  and go to step (2).

Condensation of lambda by biorthogonal ansatz-functions

$$\int \phi_i \varphi_j dx = \delta_{i,j} \int \varphi_j dx$$

results in a smaller system.

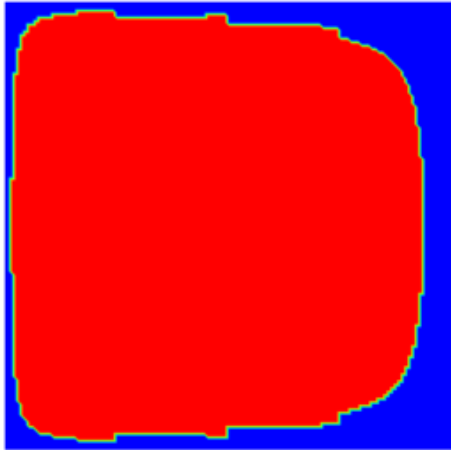
M. Hintermueller, K. Ito, K. Kunisch: The primal-dual active set strategy as a semismooth Newton method, 2003.

Brunssen, Schmid, Schäfer, Wohlmuth: A fast and robust iterative solver for nonlinear contact problems using a primal-dual active set strategy and algebraic multigrid, Int. J. Numer. Meth. Engng, 2007, 69, pp. 524-543

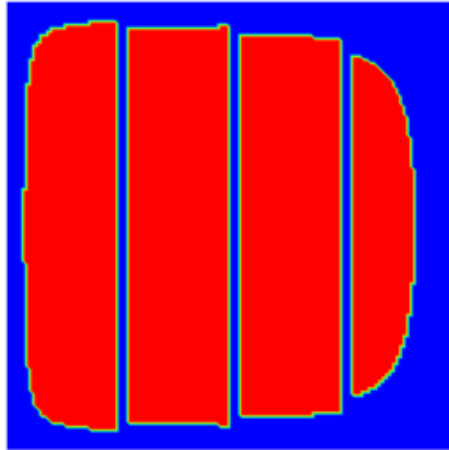
Frohne, Heister, Bangerth: Efficient numerical methods for large-scale, parallel solution of elastoplastic contact problems, submitted 2013.

# Example for linear elasticity (see step-41)

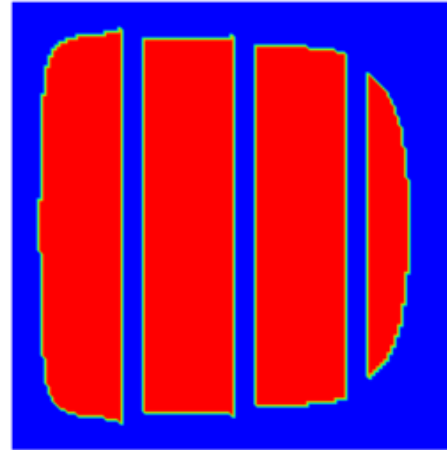
Step 0



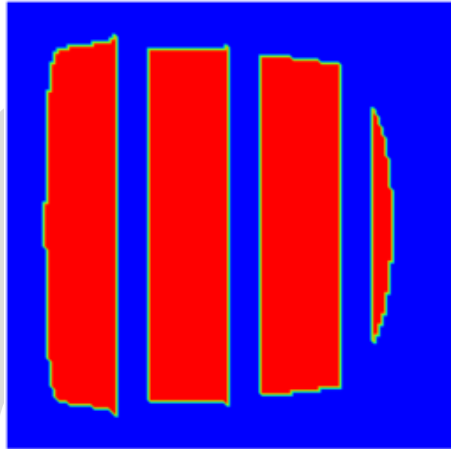
Step 3



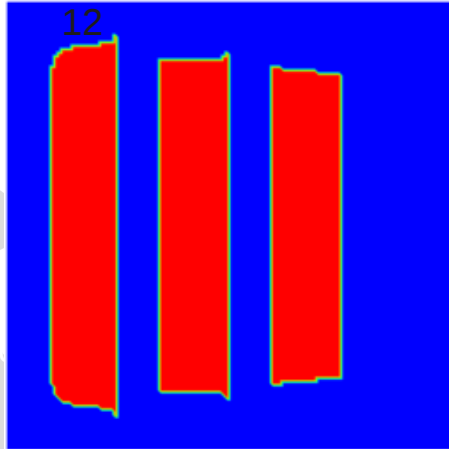
Step 6



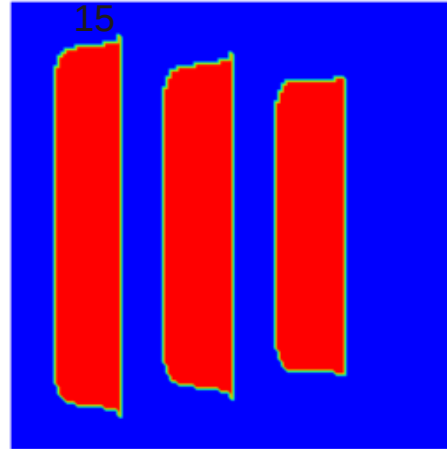
Step 9



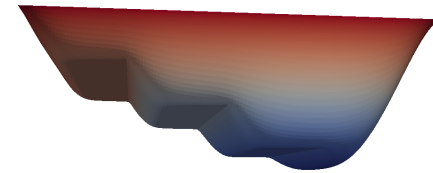
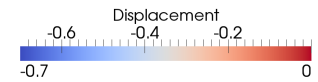
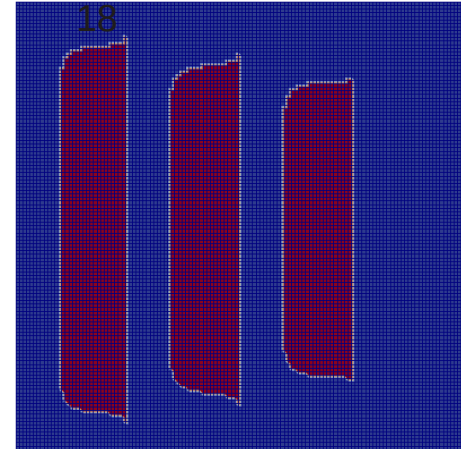
Step 12



Step 15



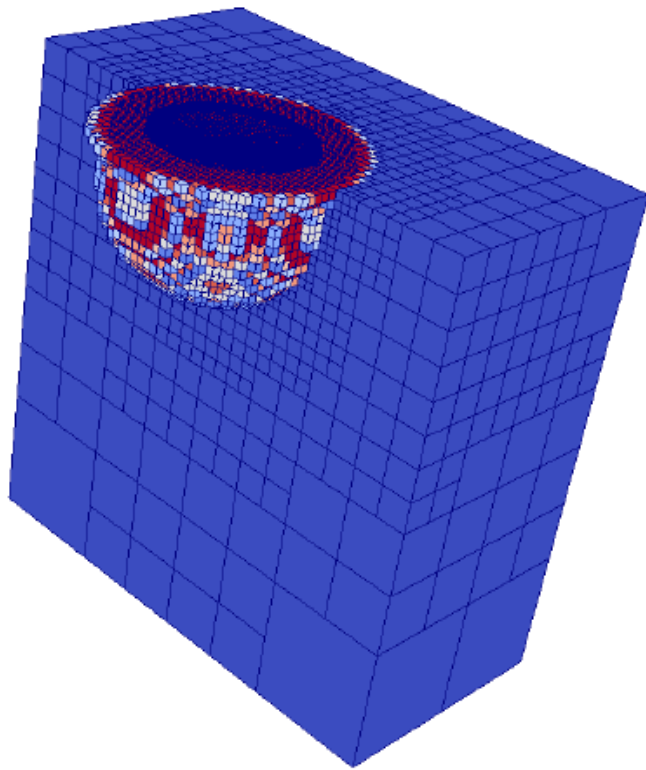
Step 18



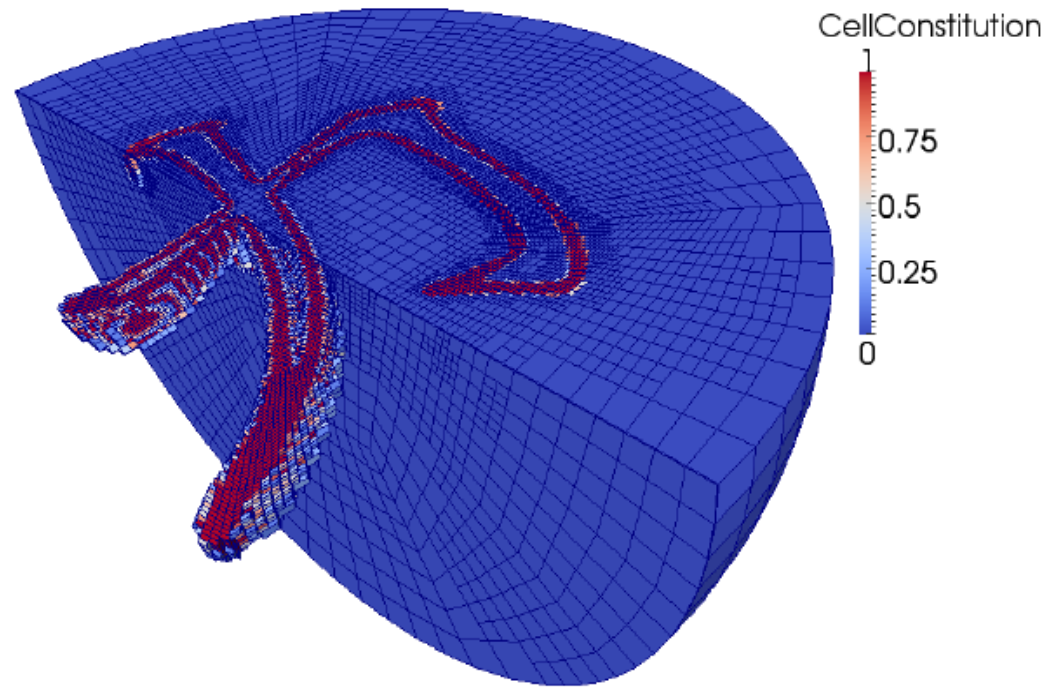
Contact-area red colored

# Two examples for the large-scale solution of elastoplasticity with contact (see step-42)

Ball

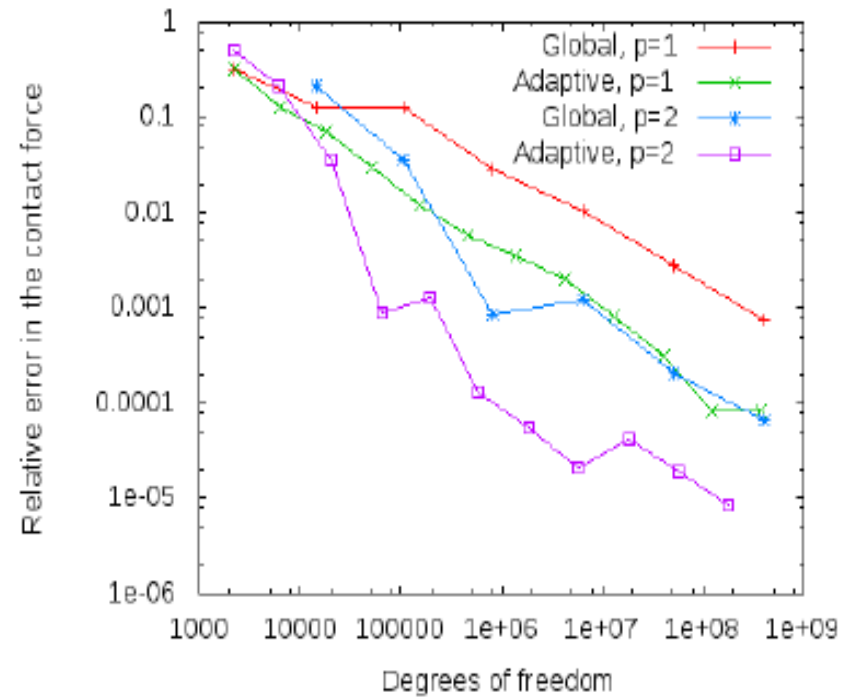
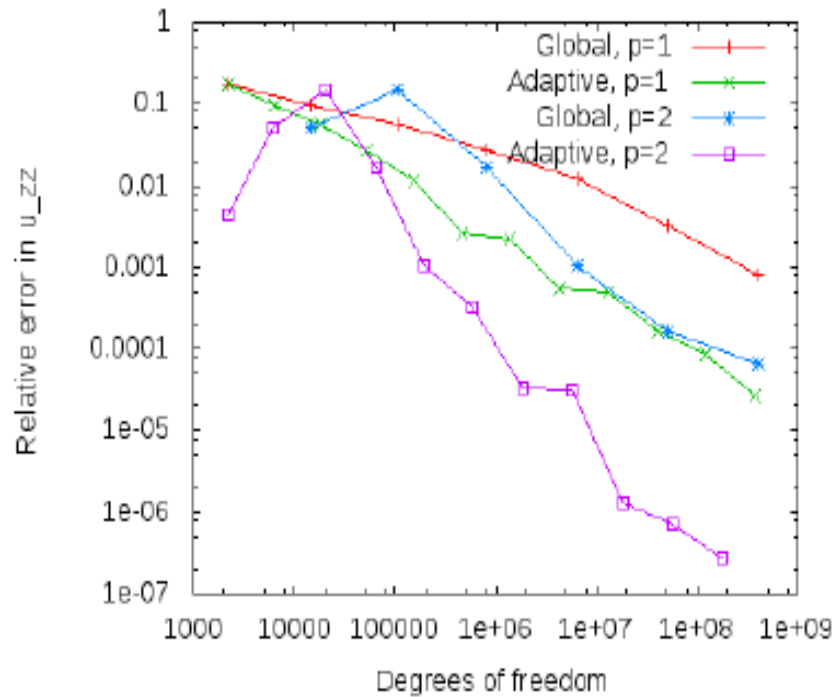


Chinese Symbol  
for force





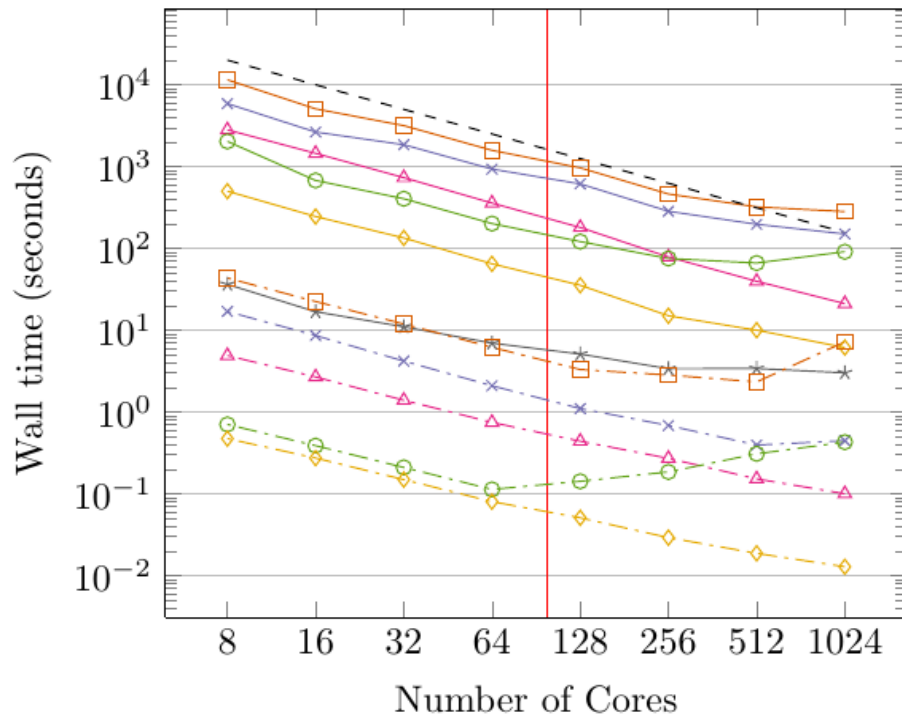
# Convergence for the left contact situation with the ball



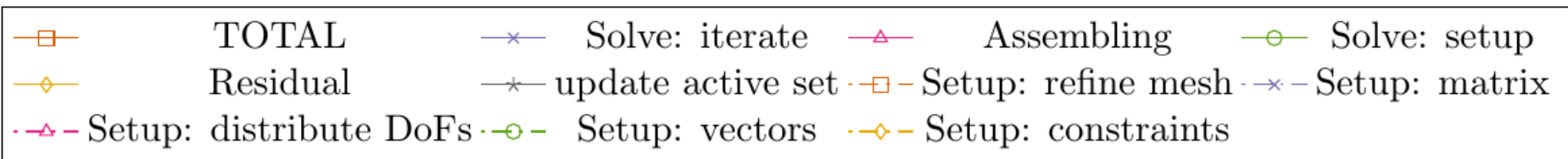
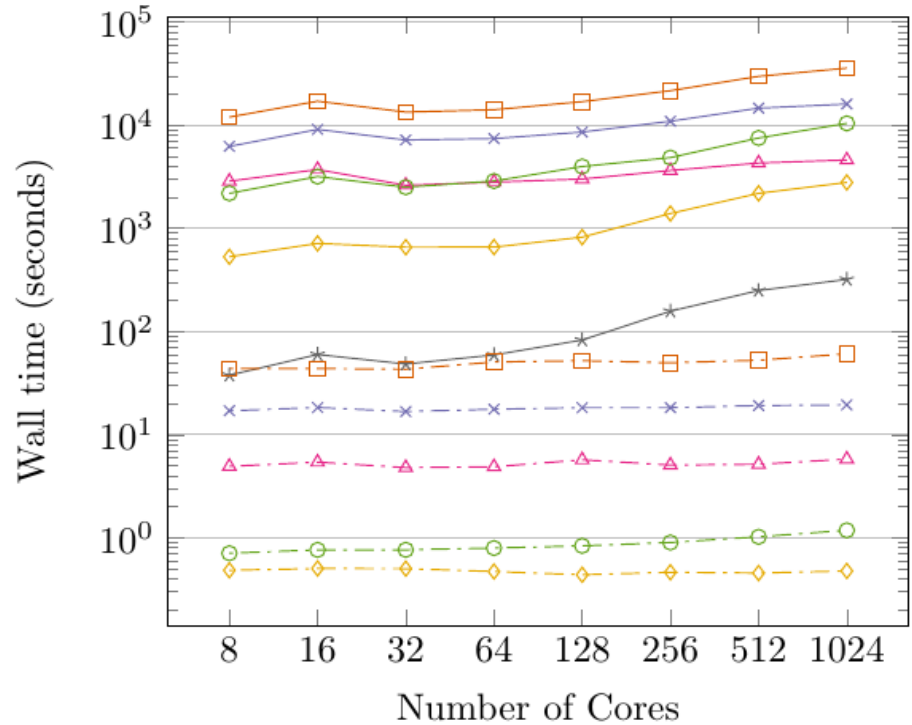
# Strong and weak scaling of our algorithms



Strong Scaling (9.9M DoFs)



Weak Scaling (1.2M DoFs/Core)



# Classical formulation of thermomechanical contact problem (with Gough-Joule effect)



$$\nabla u = E^{-1} \sigma + \lambda, \quad \text{in } \Omega \quad \text{Elasto-plastic formulation}$$

$$\lambda \cdot (\tau - \sigma) \leq 0 \quad \forall F(\tau) \leq 0, \quad \text{in } \Omega$$

$$-\text{div}(\sigma) + \text{dim } K \alpha \nabla T = f, \quad \text{in } \Omega \quad \text{Equilibrium condition}$$

$$c \dot{T} + \text{dim } K \alpha T_R - \text{div}(\kappa \nabla T) = r, \quad \text{in } \Omega \quad \text{Heat equation}$$

$$u(x, y) = 0, \quad T = 0, \quad \text{on } \partial\Omega \quad \text{Boundary condition}$$

$$(\Delta u + f)(u - g) = 0, \quad \text{in } \Omega$$

$$u(x, y) \geq g(x, y), \quad \text{in } \Omega \quad \text{Contact-conditions}$$

$$\sigma^{trial} = E \nabla u, \quad \text{in } \Omega \quad \text{Hooke's law}$$

$c$  Specific heat capacity

$\alpha$  Thermal expansion

$\kappa$  Thermal conductivity

$K$  Bulk modulus

# Linearization to apply a Newton method for plasticity



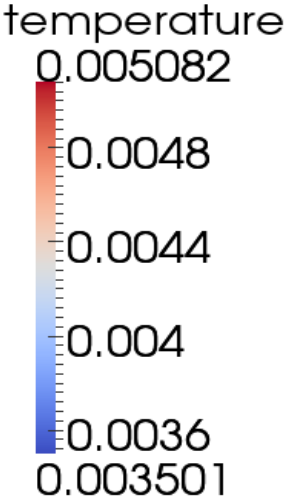
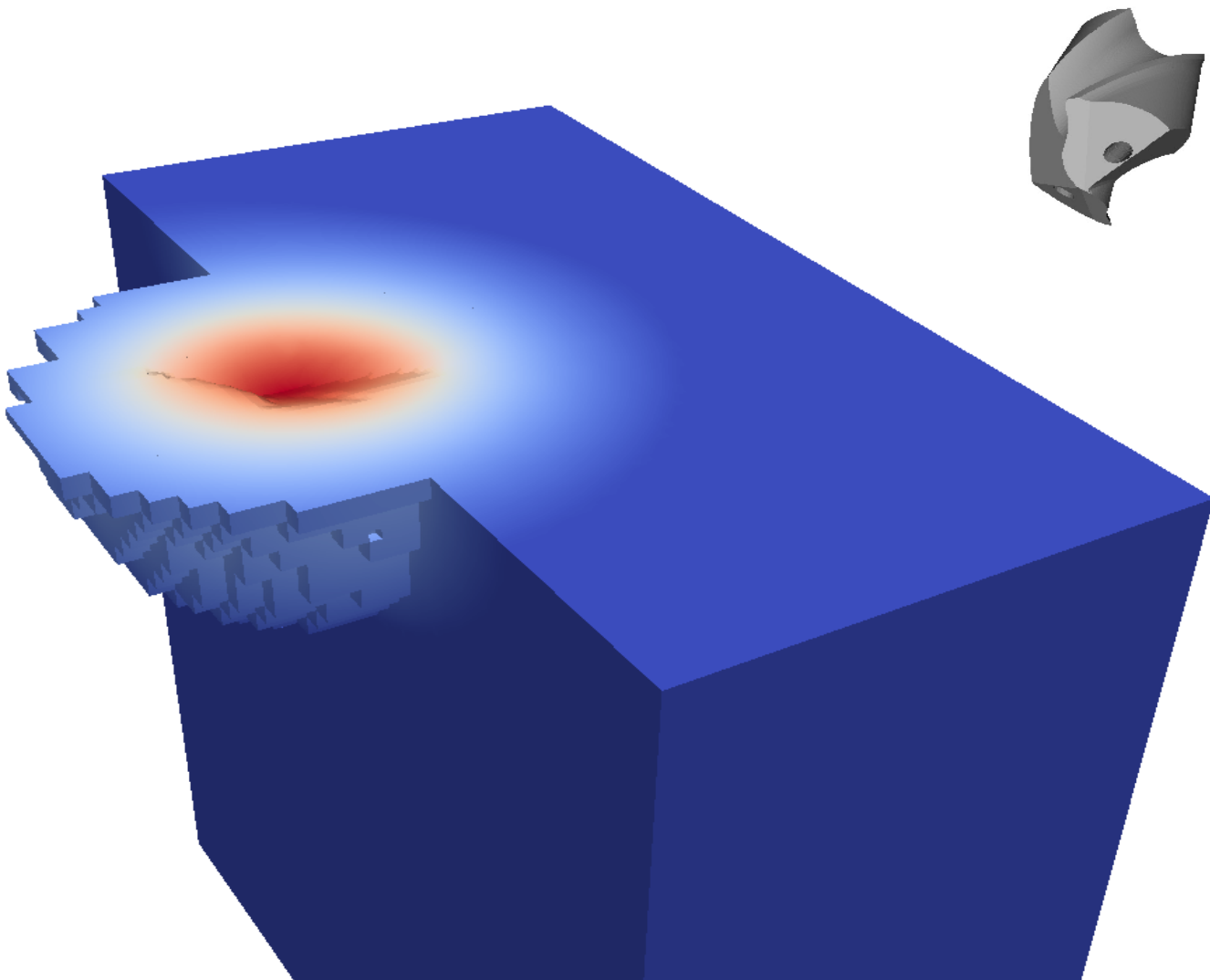
Find  $(u^i, T^i) \in V^+$

$$\begin{aligned} (P'_{ITW}(E \nabla u^{i-1}) \nabla u^i, \nabla \phi) + \dim K \alpha(\nabla T^i, \phi) &\geq (f, \phi) \quad \forall \phi \in V^+ \\ \dim K T_R \alpha(\operatorname{div} u^i, \chi) + \kappa(\nabla T^i, \nabla \chi) &= (r, \chi) \quad \forall \chi \in H_0^1(\Omega) \end{aligned}$$

Alternatively (for very short processes) one can skip the heat equation and the coupling terms and evolve the temperature as another internal variable (adiabatic):

$$\rho_0 c \dot{T} = \beta \sigma_y \dot{\varepsilon}_p, \quad \beta \text{ Taylor-Quinney constant}$$

# Solution of a coupled system with Gough-Joule effect

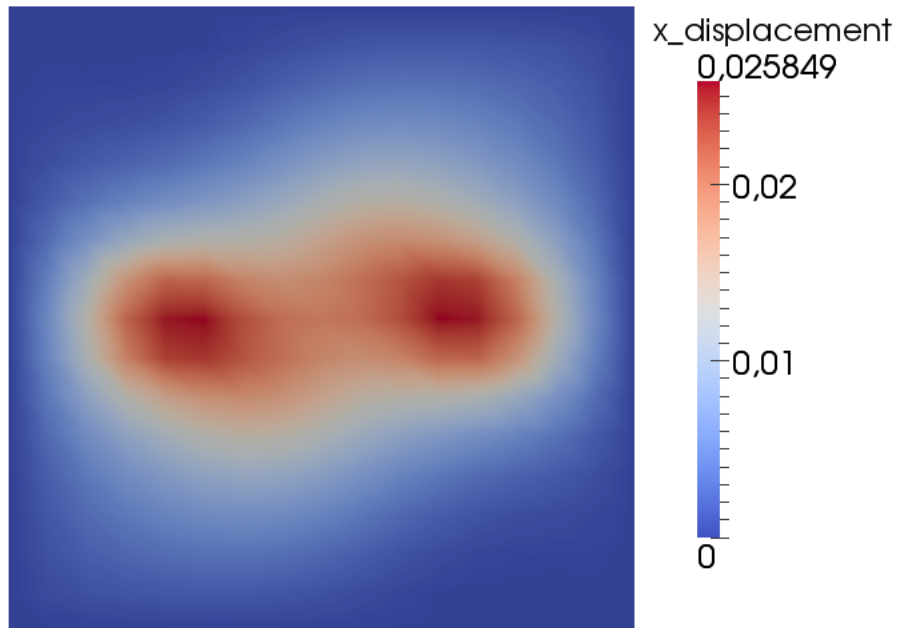


# Example of linear elasticity (step-8)

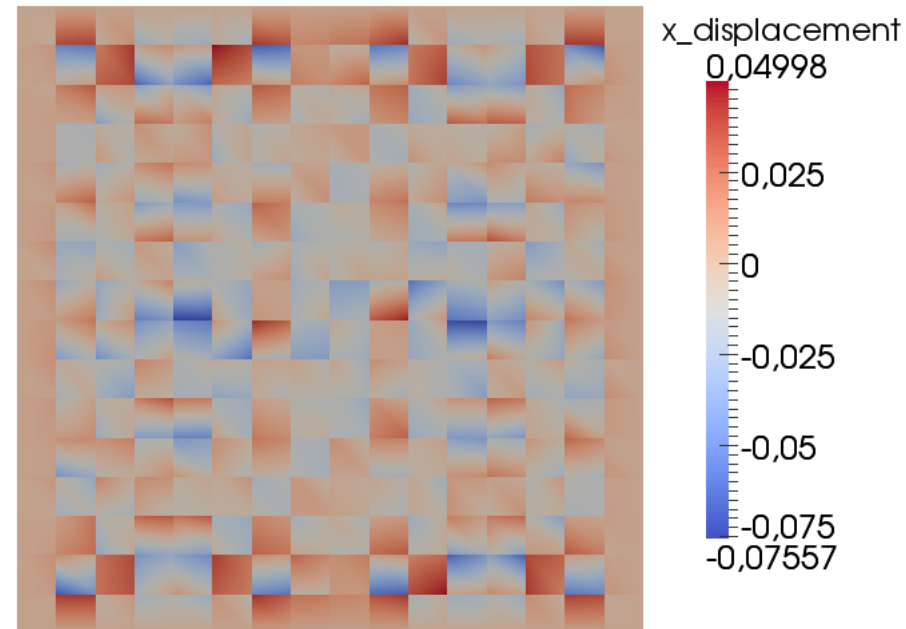
$$\begin{aligned} -\operatorname{div} \sigma(u) &= f, & \text{in } \Omega \\ u &= 0, & \text{auf } \partial\Omega \end{aligned}$$

$$f(x) = \begin{pmatrix} 1 \\ 0 \end{pmatrix}, x \in \mathbb{B}_{0.2}(0.5,0) \cup \mathbb{B}_{0.2}(-0.5,0)$$

CG elements



DG elements



## Weak formulation including:

- Penalty terms for the Dirichlet boundary
- Penalty terms for the interia boundaries

$$\begin{aligned}
 a(u, \varphi) = & \int_T \sigma(u) : \varepsilon(\varphi) dx - \int_{\partial T_{int}} (\langle \sigma(u) \cdot n \rangle \cdot \varphi) + \sigma(\varphi) \cdot n \cdot \frac{[u]}{2} ds + \mu \int_{\partial T_{int}} \frac{\gamma_\mu}{h} \cdot [u] \cdot \varphi \\
 & + \lambda \int_{\partial T_{int}} \frac{\gamma_\lambda}{h} \cdot [u \cdot n] \cdot \varphi \cdot n ds - \int_{\partial T_D} \sigma(u) \cdot n \cdot \varphi + \sigma(\varphi) \cdot n \cdot u ds + \mu \int_{\partial T_D} \frac{\gamma_\mu}{h} \cdot u \cdot \varphi ds \\
 & + \lambda \int_{\partial T_D} \frac{\gamma_\lambda}{h} u \cdot n \varphi \cdot n ds
 \end{aligned}$$

$\mu, \lambda$  Lamé constants

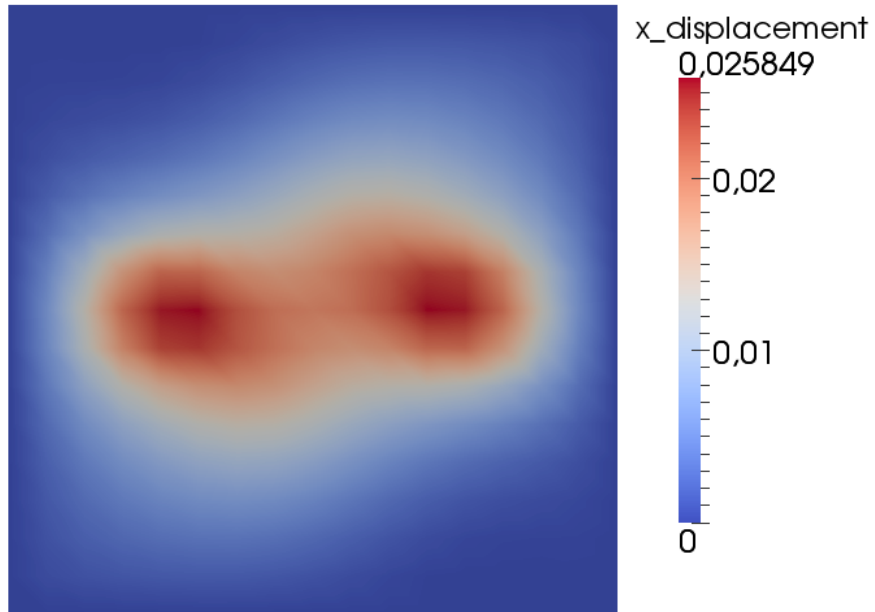
$\gamma_\mu, \gamma_\lambda$  Penalty parameters

# Example of linear elasticity (step-8)

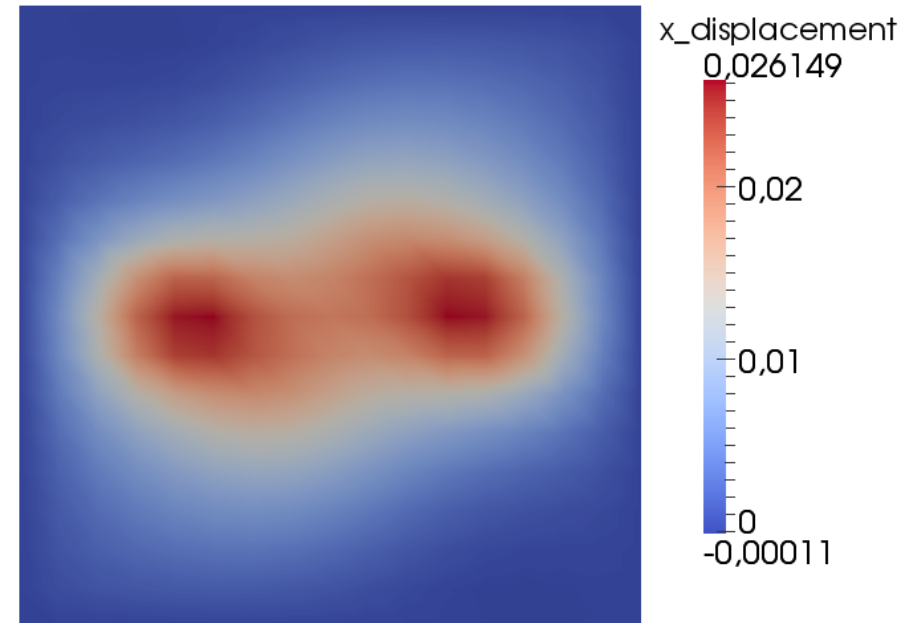
$$\begin{aligned} -\operatorname{div} \sigma(u) &= f, & \text{in } \Omega \\ u &= 0, & \text{auf } \partial\Omega \end{aligned}$$

$$f(x) = \begin{pmatrix} 1 \\ 0 \end{pmatrix}, x \in \mathbb{B}_{0.2}(0.5,0) \cup \mathbb{B}_{0.2}(-0.5,0)$$

CG



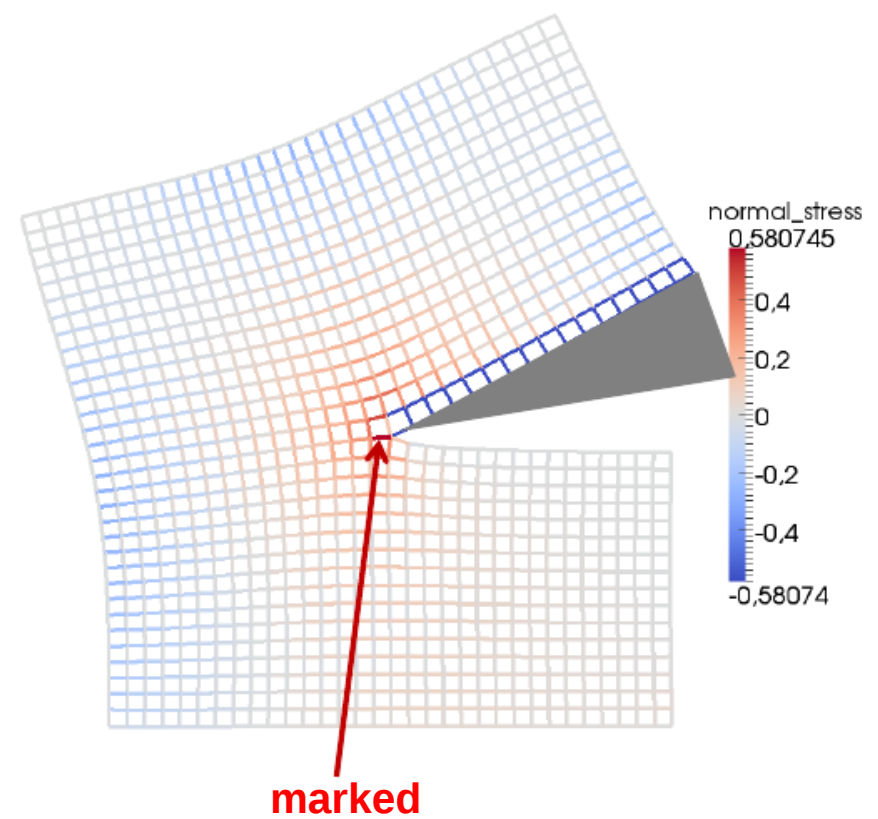
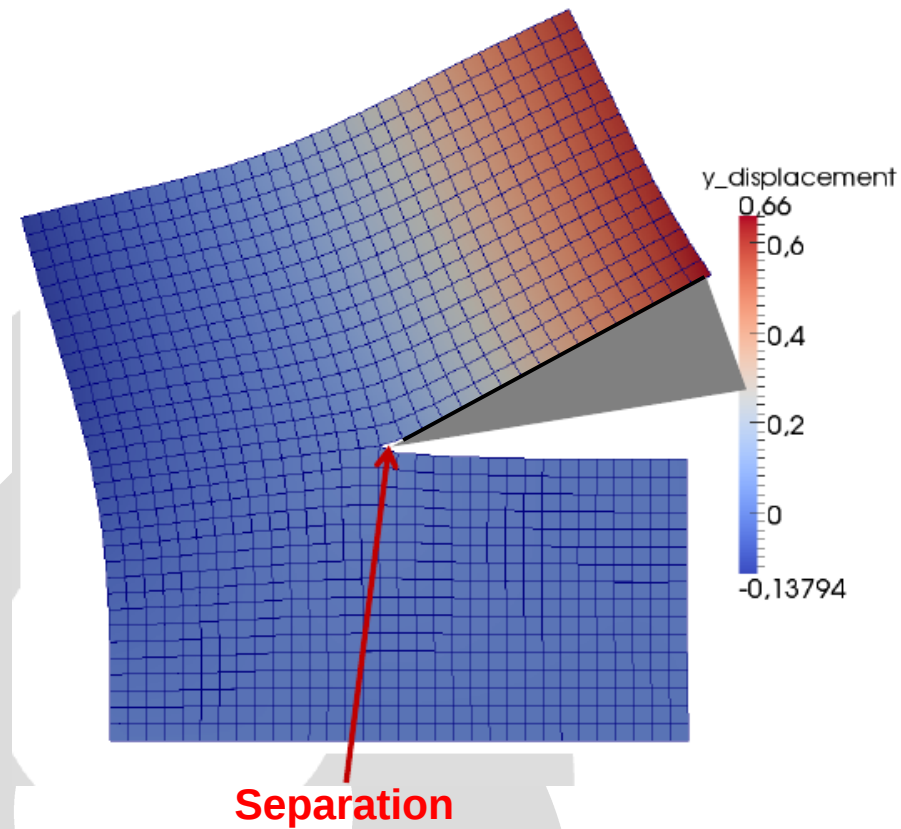
DG





# Example for mesh separation for linear elasticity

We need reasonable criteria for separation



# Advantage and disadvantage of DG



## Advantages:

- One do not have to take care about hanging nodes
- It avoids (volumetric) locking effects
- Easy way to split the mesh along an edge

## Disadvantages:

- A larger number of unknowns compared to CG elements
- How to formulate the penalty terms and how to choose the penalty parameters



Only local use of DG elements.  
But this doesn't work in parallel yet.

Hansbo – A discontinuous finite element methods for elasto-plasticity, 2008

Liu, Wheeler, Yotov – On the spatial formulation of discontinuous Galerkin methods for finite elastoplasticity, 2013

## What is done:

- Building a parallel framework for solving a coupled thermo-elastoplastic contact problem
- First steps to use the meshworker class for a DG method in linear elasticity



## What has to be done:

- Finishing implementing more fancy constitutive laws (Johnson Cook)
- Developing a DG method for thermo-elastoplastic contact problem and mesh separation
- Including friction and heat development by frictional contact
- Including the existing program in a quasi-static problem (Backward-Euler)
- Remeshing and mapping of internal variables



## We would like to have:

- Possibility to mix CG and DG elements in one mesh in a parallel the framework
- Using the meshworker class especially for the DG elements with the penalty terms also in the parallel framework

**Thank you!**  
**Questions?**



Institut für Spanende Fertigung  
Prof. Dr.-Ing. Dirk Biermann  
TU Dortmund

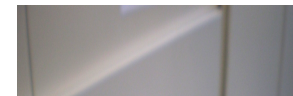
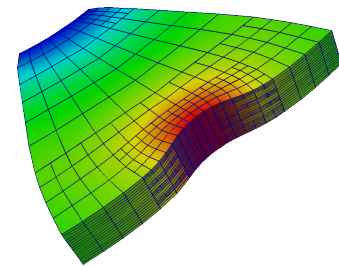
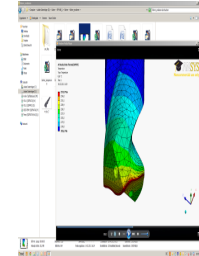


Lehrstuhl für Wissenschaftliches Rechnen  
Prof. Dr. Heribert Blum  
TU Dortmund

## Wendeltiefbohren

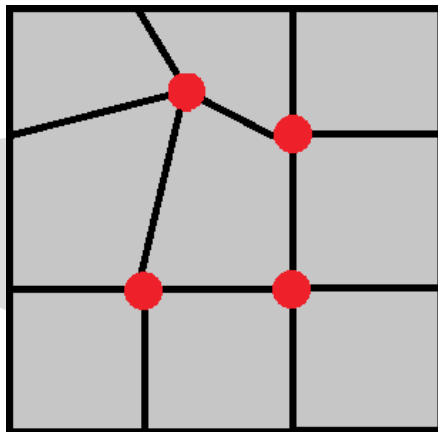
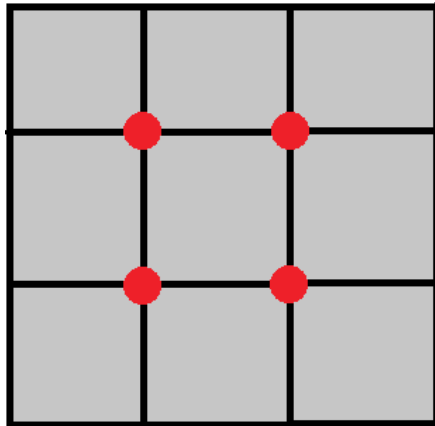
Große industrielle Bedeutung – Zylinderkurbelgehäuse

- Stand der Technik – Vollstrahlschmierung
- Herausforderungen beim Einsatz der Minimalmengenschmierung
- Gewendelte Spannuten begünstigen den Spanabtransport
- Erhöhte mechanische und thermische Belastung

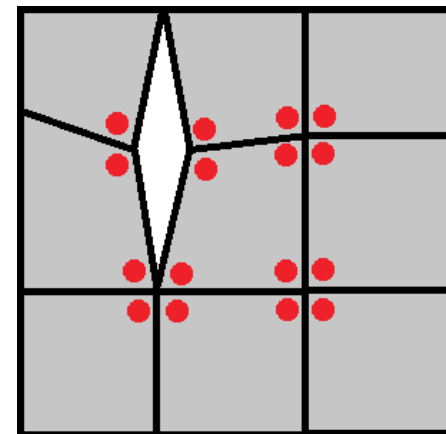
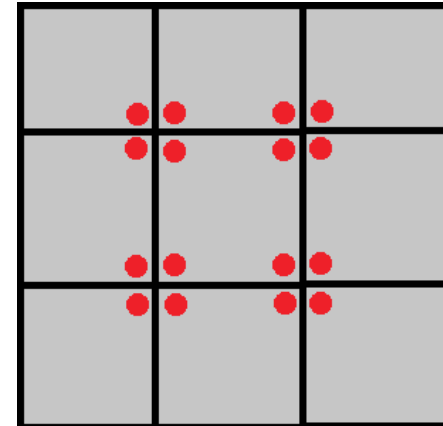


# Stetige / Unstetige Elemente

## Stetige Ansatzfunktionen ( CG )



## Unstetige Ansatzfunktionen ( DG )



Mehr Freiheitsgrade  
Größeres Gleichungssystem